



WELCOME

**NEWTON COUNTY CHILDCARE COALITION
BREAKFAST 8-28-19**

OUTCOMES FOR THIS MEETING

- You will be fed – and start your day well.
- You will be informed on the Newton County Childcare Coalition history, current projects, and upcoming plans.
- You will learn about the real deficits our schools are facing with underprepared Kindergarten students.
- You will know clearly where we stand as a Coalition and what the next steps are.
- You will be asked to make a commitment to the children of Newton County.



EARLY CHILDHOOD EDUCATION

HIGH-QUALITY CARE FOR OUR KIDS

WHY DOES IT MATTER?

- What does “high-quality” mean? Aren’t we just talking about babysitting?
- High-quality care strives to engage parents, provide age-appropriate curriculum to help kids develop on schedule, in a healthy and safe environment with trained professionals.
- Minds in Motion Story

90%

of a child's brain
development
happens
before age 5



- 90% Brain development before age 5
- 10% Brain development after age 5

Source: Harvard Center for the Developing Child

90% OF A CHILD'S BRAIN DEVELOPMENT HAPPENS BEFORE AGE 5

FRONTAL LOBE

HANDLES ALL THOUGHT AND VOLUNTARY BEHAVIOR
MEMORY, GOAL FORMATION, ABSTRACT THINKING,
PLANNING, AND IMPULSE CONTROL

PARIETAL LOBE

ASSOCIATED WITH BODILY SENSATIONS
LIKE HEAT, COLD, PRESSURE, AND PAIN
CONTROLS TASTE, TOUCH, THE ABILITY
TO RECOGNIZE OBJECTS, HAND-EYE COORDINATION



OCCIPITAL LOBE

CONTROLS VISION
AND VISUAL RECOGNITION

TEMPORAL LOBE

CONTROLS HEARING, SMELL,
LANGUAGE SKILLS, AND SOCIAL UNDERSTANDING

CEREBELLUM

RESPONSIBLE FOR BALANCE
AND MUSCLE COORDINATION.

SOURCES:

[HTTP://WWW.URBANCHILDINSTITUTE.ORG/WHY-0-3/BABY-AND-BRAIN](http://www.urbanchildinstitute.org/why-0-3/baby-and-brain)

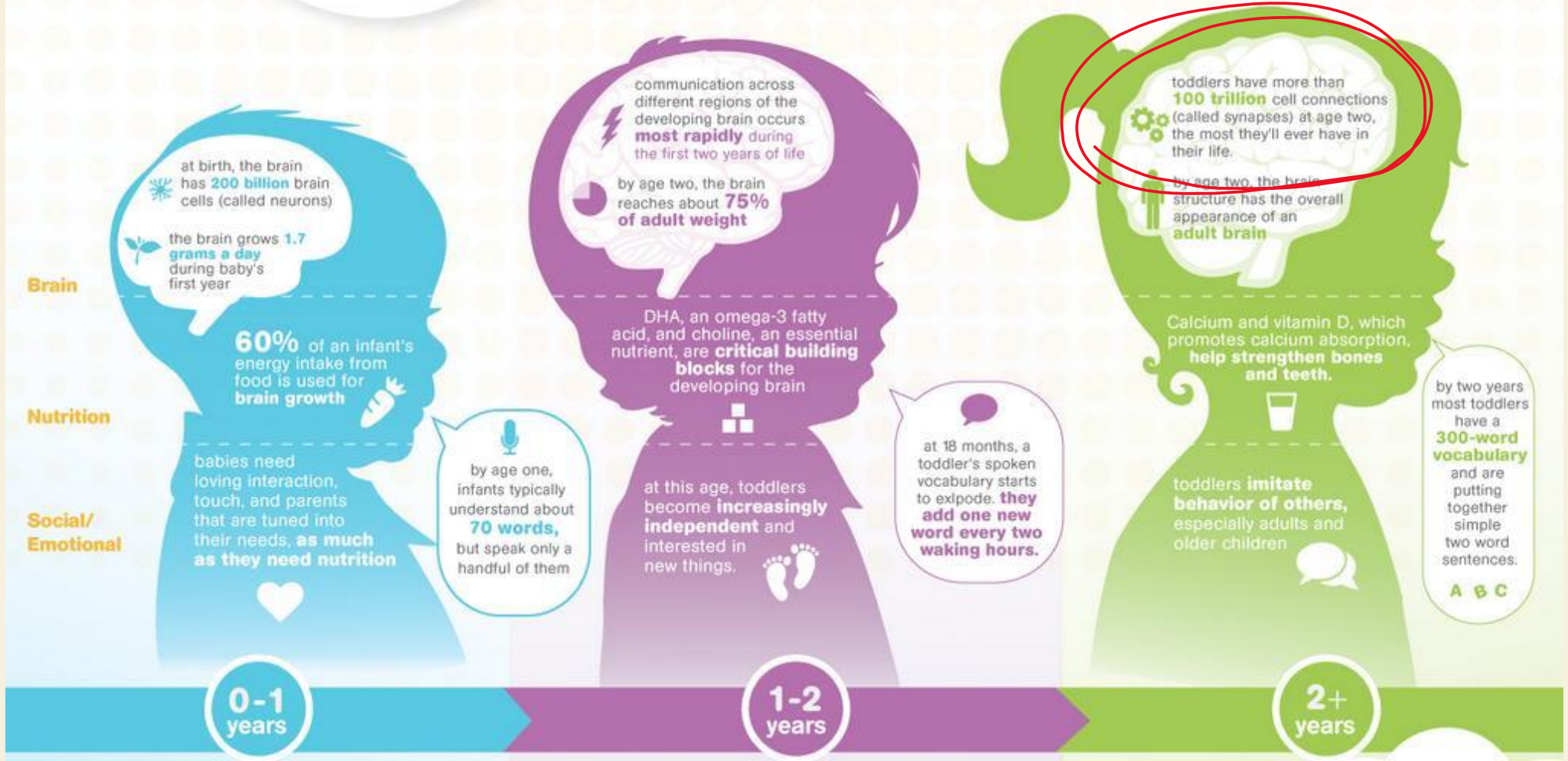
Child Brain Development



GOOD NUTRITION LEADS TO MORE STABLE MOODS, INCREASES IN ABILITY TO PAY ATTENTION, AND IMPROVED MEMORY.



LOVING AND CONSISTENT CARE-GIVING LEADS TO A BRAIN THAT HAS AN ABILITY TO LEARN TO DELAY GRATIFICATION, PROBLEM SOLVE, AND HAVE EMPATHY FOR OTHERS.



Brain

Nutrition

Social/
Emotional

0-1
years

1-2
years

2+
years

at birth, the brain has **200 billion** brain cells (called neurons)

the brain grows **1.7 grams a day** during baby's first year

60% of an infant's energy intake from food is used for brain growth

babies need loving interaction, touch, and parents that are tuned into their needs, **as much as they need nutrition**

by age one, infants typically understand about **70 words**, but speak only a handful of them

communication across different regions of the developing brain occurs **most rapidly** during the first two years of life

by age two, the brain reaches about **75% of adult weight**

DHA, an omega-3 fatty acid, and choline, an essential nutrient, are **critical building blocks** for the developing brain

at this age, toddlers become **increasingly independent** and interested in new things.

at 18 months, a toddler's spoken vocabulary starts to expode. **they add one new word every two waking hours.**

toddlers have more than **100 trillion** cell connections (called synapses) at age two, the most they'll ever have in their life.

by age two, the brain's structure has the overall appearance of an **adult brain**

Calcium and vitamin D, which promotes calcium absorption, **help strengthen bones and teeth.**

toddlers **imitate behavior of others**, especially adults and older children

by two years most toddlers have a **300-word vocabulary** and are putting together simple two word sentences.

A B C

NOT JUST FOR THE CHILDREN

Study conducted by IU Public Policy Institute – Impact of Inadequate Child Care on Indiana's Workforce & Economy from 2018

PARENTS

- Where quality Early Childhood Education is available – parents can increase work and school hours to obtain new employment or begin school or job training. Parents who participated in the project – 53% of them said the program helped them search for a job, keep their job, or improve their work schedule.

WORKFORCE

- According to the project – an investment of \$1.00 in Early Childhood Education produces a ROI of \$3.83 - \$4.00.
- Reduced turnover and training costs.
- Reliable workforce

<https://earlylearningin.org/new-report-finds-indiana-loses-billions-due-to-lack-of-access-to-child-care/>



78% of stakeholders believe that the childcare and Pre-K offerings are weak to very weak



Stakeholders shared that quality employees have been lost in recent years due to the lack of childcare for single parent families.



In the Community Survey – of those between ages 25-34 – **Pre-K education** and **Childcare** ties for the **2nd highest educational priority** along with College Readiness. The highest priority (by a slim margin) was STEM education.



In the Townhalls – churches are currently the primary care giver for the communities. Community members voiced that childcare *was a necessary area of expansion* if the communities wanted to attract and retain young workers.

RECENT COMMUNITY INFORMATION FROM CRANE + GREY ASSESSMENTS



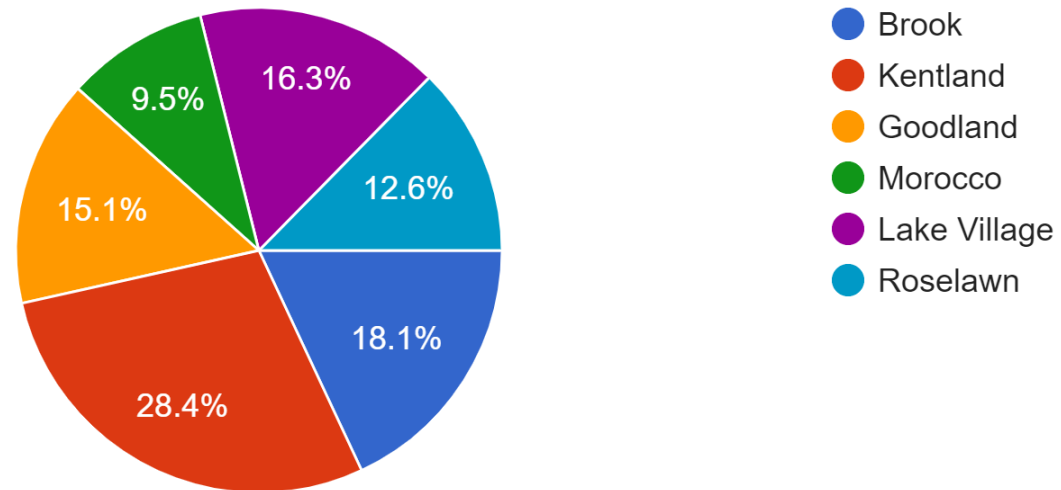
HISTORY

HOW WE ARRIVE HERE

- A group of engaged Newton County residents gathered on [June 18, 2018](#) to discuss the lack of childcare options in the county.
- A collaboration was born:
 - Step Ahead
 - Newton County Community Services
 - Newton County Purdue Extension
 - Jasper Newton Foundation
 - Roselawn Community Reformed Church
 - Head Start
 - Kentland TUMC
 - Newton County Economic Dev.
 - Childcare Resource and Referral Network
 - Right Steps, Inc.
- We deployed a Childcare Survey with the help of Rose Acres and both school systems in late [July 2018](#).

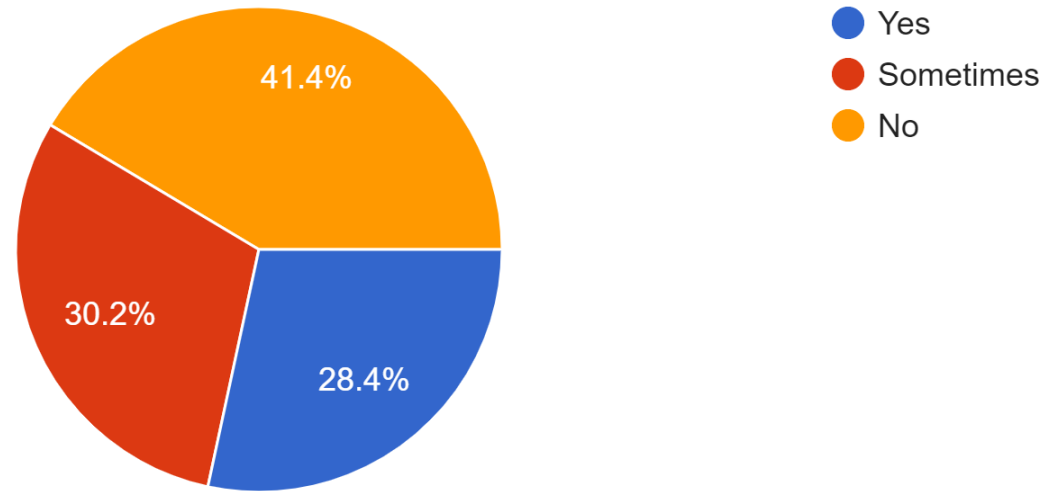
Which town/city do you reside in (or which are you nearest to)?

443 responses



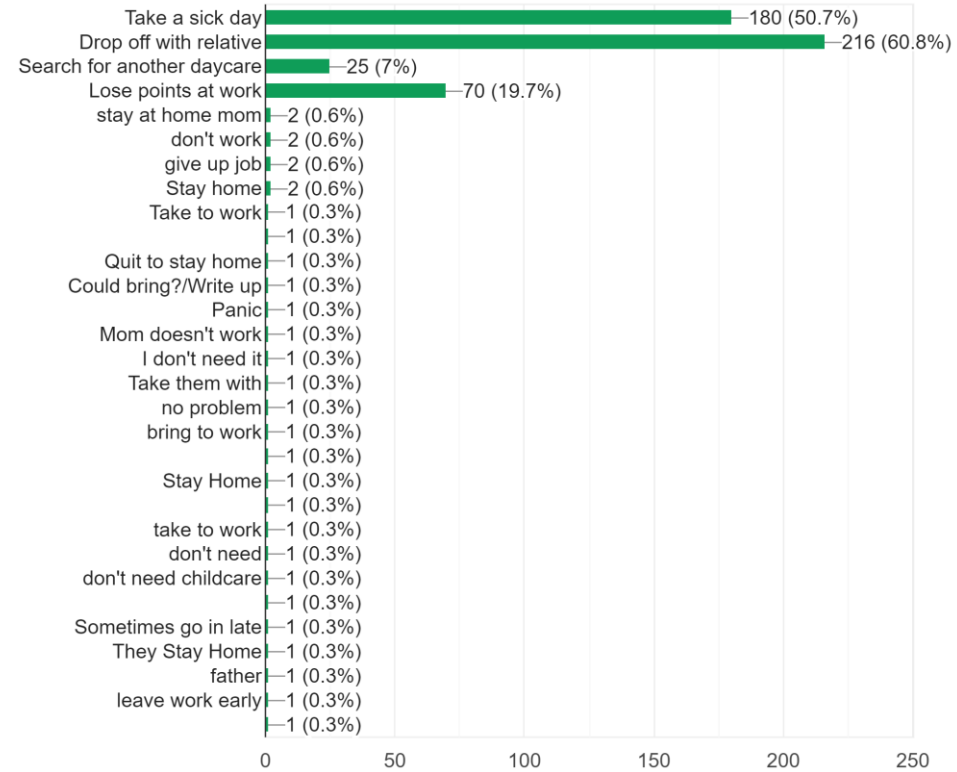
Do you have difficulty finding child care?

437 responses



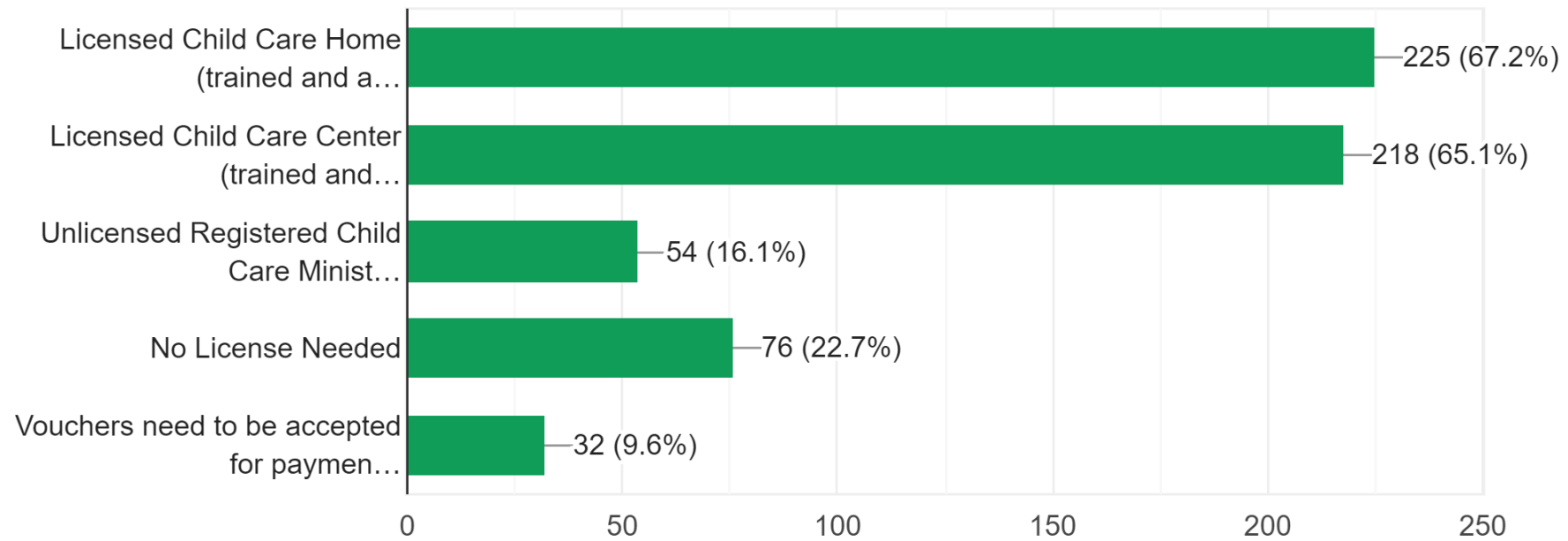
What happens when you are not able to find child care?

355 responses



What type of child care would you be comfortable with?

335 responses



- A grant was announced through Office of Early Childhood and Out-of-School Learning (OECOSL) and Early Learning Indiana. [September 2018](#)
- We assisted Roselawn Community Reformed Church is applying for this grant. [October 2018](#)
- Right Steps, Inc. expressed interest in expanding services into Newton County.
- Meeting with the Town of Goodland and childcare licensing agents to make sure the two classrooms in the Goodland Community Center are ready to go. [November of 2018](#)



SUCCESSSES

- Goodland bathroom upgrades are complete!
- Thank you to the Town of Goodland, Holly Porter of Newton County Community Services, and Newton County Economic Development who donated the funding for those repairs.
- Roselawn Community Reformed Church was awarded the \$144,375 OECOSL and Early Learning Indiana Grant!
- Also awarded a Jasper Newton Foundation Grant for \$16K for fire system.
- Preschool starts THIS FALL!



RIGHT STEPS

WHAT DOES THIS PARTNERSHIP LOOK
LIKE?



Over 45 years of experience.



Community Engagement



Expansive Care Options

**COMPETENT
ORGANIZATIONAL
LEADERSHIP**



Comprehensive Plan for 2 Classrooms



Multi-Age Room and 3's, 4's, and 5-year-olds to maximize space.



Employee Retention



Our Community NEEDS this option for care.



Parent run facilities – no matter how noble – do not work.

**ORGANIZATIONAL
CAPACITY**

Jasper Newton Foundation is a Resource
for Funding

Donations are tax-deductible.

Grant Smarts

Buying Power and Experience

LOCAL Focus

NONPROFIT

\$\$\$

ANNUAL OPERATIONAL COSTS

Center Capacity		28 total students
	Multi-Age Room	8
	Infants	3
	1 and 2-year-olds	5
	3's, 4's, and 5-year-olds	20
Room 1 Salaries	\$ 71,760.00	
Room 2 Salaries	\$ 81,120.00	
Benefits	\$ 49,400.00	
Overhead	\$ 85,800.00	
Food	\$ 36,000.00	
TEACH	\$ 2,000.00	
Supplies	\$1,000.00	
Total Operating Costs Annually (fully staffed)		\$ 371,800.00

Benefits	Overhead Breakdown
FICA	Admin Salaries 10-15%
SUTA	Professional Fees:
SS	Abstract (tech)
County	Saashr (HR software)
Workman's Comp	Audit Fees
MEDICAL	Insurance Agency
Health Savings Account	Travel
Life Insurance	Training
Short Term Disability	Technology
Retirement	

ONE TIME SET-UP COSTS

Multi-Age Room	\$ 19,227.00
3's, 4's, and 5-year-olds	\$ 27,255.00
Total	\$ 46,482.00

The projected Worst-Case Scenario has this site with a second-year funding gap of \$184,000.00



GROWING PATCH LEARNING CENTER

**HOW THE NUMBERS WORK IN REAL
TIME**

2018 By the Numbers GPLC

INCOME	\$ 136,000.00	Childcare Services
CCDF Vouchers	\$ 7,300.00	
Grants	\$ 5,000.00	
Donations	\$ 70,400.00	
EXPENSES		
Staff Expenses	\$ 166,500.00	
Drug Testing	\$ 1,250.00	
Work Comp.	\$ 2,900.00	
Training	\$ 1,750.00	
Program Expenses	\$ 26,400.00	Meals and Supplies
	\$ 6,500.00	Facilities
	\$ 9,300.00	Utilities
	\$ 3,033.00	Insurance/Other fees
End of Year Balance	\$ 1,067.00	

2018 ENROLLMENT

March	6
April	10
May	12
June	16
July	23
August	30
September	35
October	40
November	44
December	43

Additional Costs that were donated by board members (lawncare, supplies, etc) – Additional \$10K - \$20K in Expenses.

2019 By the Numbers (so far)

INCOME	\$ 143,500.00	Childcare Services
CCDF Vouchers	\$ 9,700.00	
Grants	\$ 8,800.00	OECOSL \$20K
Donations	\$ 30,200.00	
EXPENSES		
Staff Expenses	\$ 158,600.00	
Drug Testing	\$ 700.00	
Training	\$ 1,900.00	
Program Expenses	\$ 22,500.00	Meals and Supplies
	\$ 2,039.00	Facilities
	\$ 7,400.00	Utilities
	\$ 2,700.00	Insurance/Other fees
Current P&L	(\$ 3,369.00)	
Projected 2019	(\$ 30,000.00)	

- This IS doable with donations and community support.
- This is including funding from OECOSL for expansion of space and purchase of much-needed equipment.
- Started the year with 48 students – lost a few over summer and starting back this fall with 42.



THIS CAN WORK



IT WILL TAKE DONATIONS AND
COMMUNITY FINANCIAL
SUPPORT

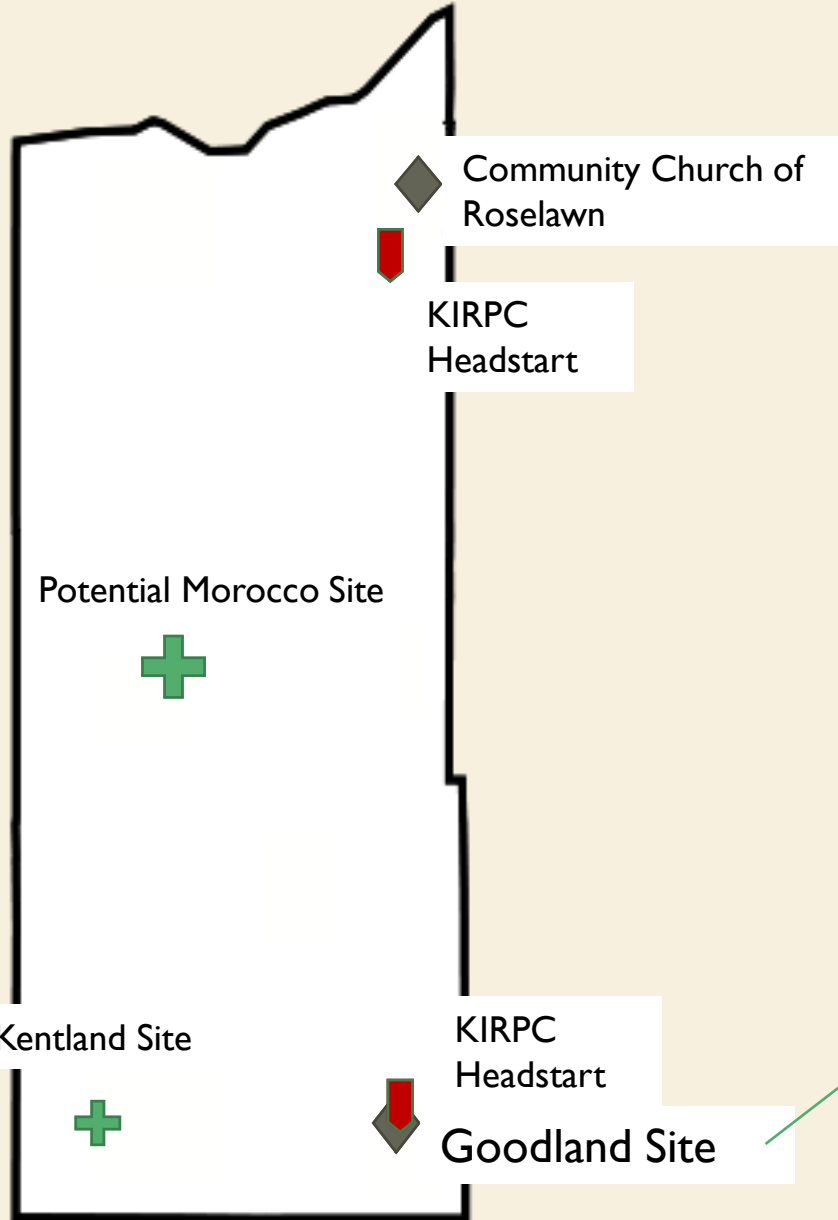


IT WILL TAKE GRANT DOLLARS



A COMMITMENT TO OUR KIDS

JASPER NEWTON FOUNDATION FUND



Potential Kentland Site

KIRPC
Headstart

Will be the only 0-5
licensed, high-quality
daycare in Newton
County.

NEWTON COUNTY EARLY CHILDHOOD EDUCATION FUND

- Goodland Site will be PRIORITY
- Funds will be available to ALL sites
- Newton County Childcare Coalition Advisory Board
- **The Jasper Newton Foundation Board has committed \$30K a year for three years.**
- Right Steps can help local businesses “RESERVE SEATS” for employees

**NEWTON COUNTY
EARLY CHILDHOOD
EDUCATION FUND**

- Funds Designation is Possible



COMMITMENT CARD

WHAT CAN YOU DO TO HELP?



#LOVEWHEREYOU LIVE